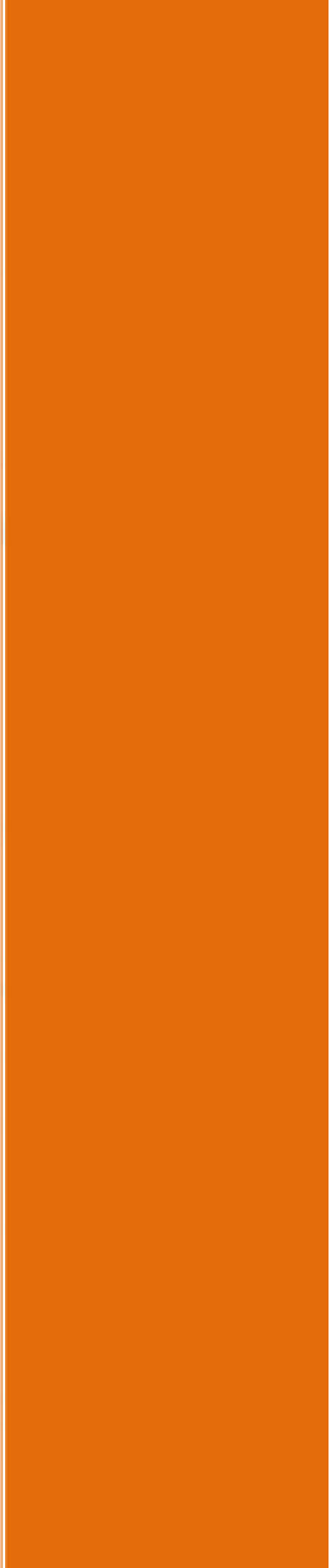
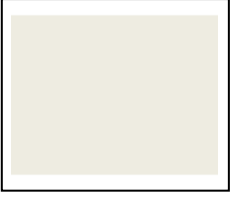


1778 VT Route 105
Newport Vermont
802-334-7779



Today, I would like to give you more information on one specific product that will fit your operational needs in many ways:

the **FAVERO SNOW RABBIT (SR3X)**.

This smaller SR3X versatile groomer has been meeting the needs of European Alpine and Nordic sectors for over 30 years and was first imported to North America by us in 2015.

The SR3X has proven itself to be not only to be a competent low cost Nordic/XC trail groomer, but more importantly, it is a smaller utility vehicle that has all types of summer and winter uses that can benefit your resort operations.



INNOVATIVE VERSATILE EFFICIENT RELIABLE AFFORDABLE

The SR3X Snow Rabbit with 12 way blade retails for \$128,000, and comes in at about \$150,000 with an additional full 9'6" wide tiller.

For around \$200,000 you get an SR3X on winter or summer tracks along with tiller, snow blower, aerial platform crane, rear deck welder mounts & tower snow-gun moving mounts.

The Snow Rabbit complements your mountain fleet by doing the job of several larger more expensive vehicles through a more affordable and efficient approach.

The **FAVERO SNOW RABBIT®** is fairly new to North America, but has been well appreciated in Europe for decades. It is affordable, well built and delivers great performance and reliability.

"Seeing is believing"! The best way to appreciate what I'm sharing here is to operate our products directly or see them live. TRACK Inc representatives will be at all upcoming NSAA winter events but will also be bringing our vehicles to your region this winter.

If you would like to meet to discuss further or schedule an on property demo, please contact our sales manager, Paul Tetreault at 802-487-9480 or paul.t@trackinc.com. We are always ready to answer any questions you might have.

Despite these challenging times, we invite you to contact us for more details on the SR3X and to arrange an in person meeting to review and arrange demoing our products directly at your location this season.

Sincerely,

Mike Desmarais

Owner, TRACK inc.
mike.d@trackinc.com

11 REASONS WHY TRACK INC.'S SR3X IS THE MOST VERSATILE MOUNTAIN GROOMER:

1. Summer and winter tracks available making it a 4-Season on mountain machine.



2. 8 & 12 way blades for pushing, sculpting, and maintaining tubing & terrain parks.



3. Power tiller for XC trails, tubing parks, snowmobile trail maintenance & Terrain Park features

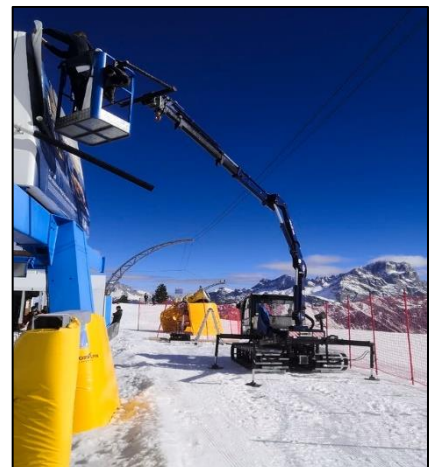


4. Easy to install Snow blower attachment offering great walkway and road maintenance.

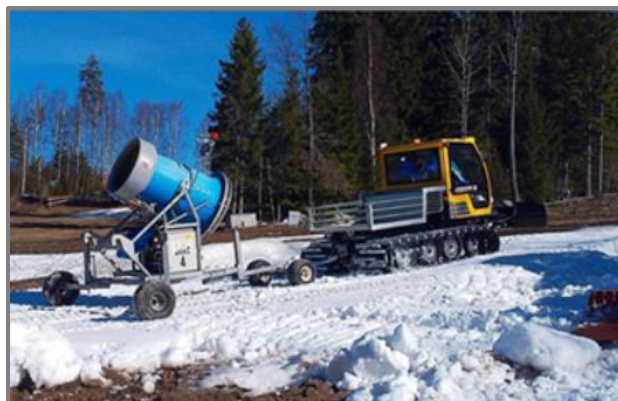


For more info call us at 802-334-7779, go to TRACKinc.com or like us on Facebook

5. Platform attachments and add on options enables easy lift access maintenance, tower fan-gun maintenance and facility night lighting maintenance



6. The SR3X moves fan-guns and portable tower guns with ease. Excellent for FIS caliber race course construction & support.



7. The operator cab has seating for two inside and comes with standard rear 48'² platform. The SR3X can be equipped with either a rear high or low cab for transport of people and or supplies on mountain or throughout your resort all year long on summer or winter tracks.



SR3X with low rear cab



SR3X with high rear cab & tiller



SR3X inside rear cab

8. Total weight under 5,000 lbs allows for quality winter grooming with minimal snow disturbance and minimal turf disturbance throughout your non winter season.



SR3 with Tiller



SR3X with snowmobile trail drag

9. 134HP efficient Kohler turbo diesel TIER-4F engine consumes **only 1.6 gallons** per hour.



SR3X with rear boom crane

10. Excellent maintenance support with decades of experience from Track Inc.



11. Easy leasing terms, from 3 to 7 years with winter only payment options available.



For more info call us at 802-334-7779, go to TRACK Inc.com, or like us on Facebook